

## The Academy for Spiritual Formation is:

- For lay and clergy persons who hunger for spiritual growth
- An opportunity for spiritual growth in a disciplined loving community
- A time for celebrating wholistic spirituality, using gifts of body, mind and spirit to grow in Christ
- A time when the rhythm of morning and evening prayer and Holy Communion set the rhythm for the retreat
- A time where community silence enhances personal prayer and reflection
- A space where spiritual journeys may be shared in covenant groups and with others
- An opportunity for individual spiritual guidance



## New England Annual Conference Three-Day Academy for Spiritual Formation

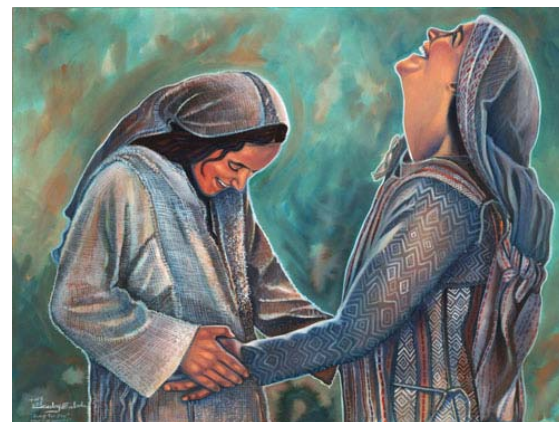
### Theme:

### *Warm Hearts, Kindred Friends*

**October 14 - 17, 2010**

**Rolling Ridge Retreat &  
Conference Center  
660 Great Pond Road  
North Andover, MA  
978-682-8815**

[www.rollingridge.com](http://www.rollingridge.com)



### Warm Hearts, Kindred Friends

In an age of Facebook friends, global village connections and yet persistent stories of abuse, how can we cultivate and expand spiritual friendships, become companions with others on the journey? Using the Lucan story of the visitation of Mary and Elizabeth as a lens, we will explore the relational mystery at the heart of the Gospel, and discover the joys and struggles of forming community with others and deepening community in the church. How might we affirm and celebrate friendships? How might we expand friendships? How might Mary and Elizabeth, and John and Zachariah teach us to value what is within us and to support and encourage one another on our everyday journeys

### Meet our Faculty



**Dr. Wendy Wright** is a gifted writer and retreat leader in contemporary spirituality, who weaves historical insights and common experiences into clear paths for the journey. A frequent contributor to Weavings and much loved Academy presenter, Wendy is on the faculty of Creighton University in Omaha, Nebraska. Her books include Sacred Dwelling, The Rising, The Vigil, Francis De Sales, and some of the Companions in Christ series.

### Rolling Ridge Retreat & Conference Center

Rolling Ridge is a gracious 40 room European-styled courtyard estate on 38 acres on the tranquil shores of Lake Cochichewick in North Andover, MA. A ministry of the New England Conference of the United Methodist Church, for over 60 years, the Ridge has welcomed people of all faiths to come away and find renewal in the peaceful and historic grounds and conference center. Guests are treated to fine food in the dining room which is also known as the Lakeside Gallery featuring art from the local artist guild. Twenty two distinctive bedrooms look out on to the courtyard or lake and the Ridge Wellness Center offers guests appointments for massage, healing touch or other renewing therapies. Two outdoor labyrinths, a small peace garden and shore line trails provide space for outdoor enjoyment. Rolling Ridge - "a true oasis of quiet beauty and gracious hospitality."

## The Schedule

The Three-Day Academy will begin on Thursday October 14, with registration from 4:00-5:30. The Academy will conclude with lunch on Sunday, October 17. Each person will be an integral element of the academy experience, so it is essential that each participant be present throughout the entire three days.

Each day will begin and end with prayer together. Communion will be celebrated daily. Morning and afternoon teaching sessions are structured around a lecture on Christian spirituality, followed by an hour of silent reflection and then discussion. Mealtimes and an afternoon break enable participants to get acquainted in an informal atmosphere. Small groups each evening will encourage members to share their experiences of the day and to reflect upon the question:

“What is God saying to me?”

Participants should bring a journal, Bible, notepad, a favorite devotional book, comfortable clothes and shoes, personal items, and an alarm clock.

Dr. Wendy Wright, our presenter, suggests reading *Kindred Souls by Stephanie Ford* as a preparation for your time together.

## Cost

The total cost for room, board, and tuition is \$380 for a single and \$315 for a double, which includes a deposit of \$50. Total cost for commuter \$240.

1.5 continuing education units are available for an additional cost of \$7.50 to be paid on site.

Limited scholarship assistance is available for lay persons. (contact Rosemary McNulty 978-682-7676 x201 or [Rmcnulty@neumc.org](mailto:Rmcnulty@neumc.org))

We have made arrangements at the *Holiday Inn Express* in North Andover for overflow rooms. Pay the commuter rate. Make separate room reservations with Holiday Inn by Sept. 30 - (Academy per night rate of \$69 for double and \$79 for King)

For reservations, call 1-800-Holiday or on line at [hiexpress.com/andovernorth](http://hiexpress.com/andovernorth). Group code RRC.

Clergy can apply for MEF funds from the Board of Ministry (contact Cathy MacGovern at 413-736-5840 or [pascm@comcast.net](mailto:pascm@comcast.net))

## Registration

Registration deadline is September 20, 2010. The deposit of \$50 is non-refundable after this date.

To register, send the attached form and a \$50 deposit to:

Academy Registrar  
Rosemary McNulty  
PO Box 249  
Lawrence, MA 01842

Balance is due September 20, 2010.

*This event is subsidized by the New England Annual Conference and Preachers Aid Society.*

## Leadership Team Includes

**Rev. Larry Peacock**, Retreat Leader, is an ordained United Methodist Pastor, a spiritual director, retreat leader, author of *Openings*, and Executive Director of Rolling Ridge Retreat & Conference Center in N. Andover, MA. After completing The Upper Room's Two Year Academy for Spiritual Formation, he served as the retreat leader for several 2 Year Academies in California. He continues his work with the Academy as a member of the Academy Advisory Board and as a faculty speaker across the country.

**Wanda Stahl**, *Registration and Hospitality*, serves as Director of Christian Formation for the New England Conference. She enjoys working with adults in a variety of spiritual formation settings. Wanda is trained in Spiritual Guidance and Retreat Leadership through the Shalem Institute.

**Beth Garnaas-Holmes**, *Covenant Group Coordinator*, is a Spiritual Director and Retreat Leader living in Concord, NH. She served many years as a pastor in the United Methodist Church, with a focus on spiritual formation in a congregational setting. She is a graduate of the Upper Room's Two Year Academy, the Shalem Institute's Spiritual Guidance Program, and the Mercy Center of Colorado Spring's Spiritual Directors' Training program. Music, quilting, walking and nature all nurture her sense of the Divine Presence. She is married to Steve Garnaas-Holmes and the mother of three grown sons.

### Ben Yosua-Davis, Worship

Ben has been leading and designing worship experiences since he was sixteen. While in seminary, he trained with both Marcia Mcfee and Mark Miller while working as music director at Trinity United Methodist Church and Monroe Community Church in New Jersey. Currently he is co-pastor of the Good Shepherd United Methodist Church in Haverhill, MA and is part of a team planting the Vine, a new spiritual community in the same city.

## REGISTRATION FORM

New England Conference  
Three-Day Academy for Spiritual Formation  
Oct. 14 - 17, 2010

**(Registration Deadline:  
September 20, 2010)**

Name \_\_\_\_\_

Address \_\_\_\_\_

City: \_\_\_\_\_ State: \_\_\_\_\_ Zip: \_\_\_\_\_

Phone: \_\_\_\_\_

Email: \_\_\_\_\_

Your name as you want it on your name tag:

Male \_\_\_ Female \_\_\_ Lay \_\_\_ Clergy \_\_\_

Local Church: \_\_\_\_\_

Single \_\_\_\_\_ Double \_\_\_\_\_ Commuter \_\_\_\_\_

Roommate request \_\_\_\_\_

Special Needs (i.e. diet)

Please send this registration form along with your \$50 deposit to:

Academy Registrar  
Rosemary McNulty  
PO Box 249  
Lawrence, MA 01842

*Checks should be made out to:  
New England Conference*

**Registration deadline is Sept. 20, 2010.  
The deposit of \$50 is non-refundable  
after this date.**